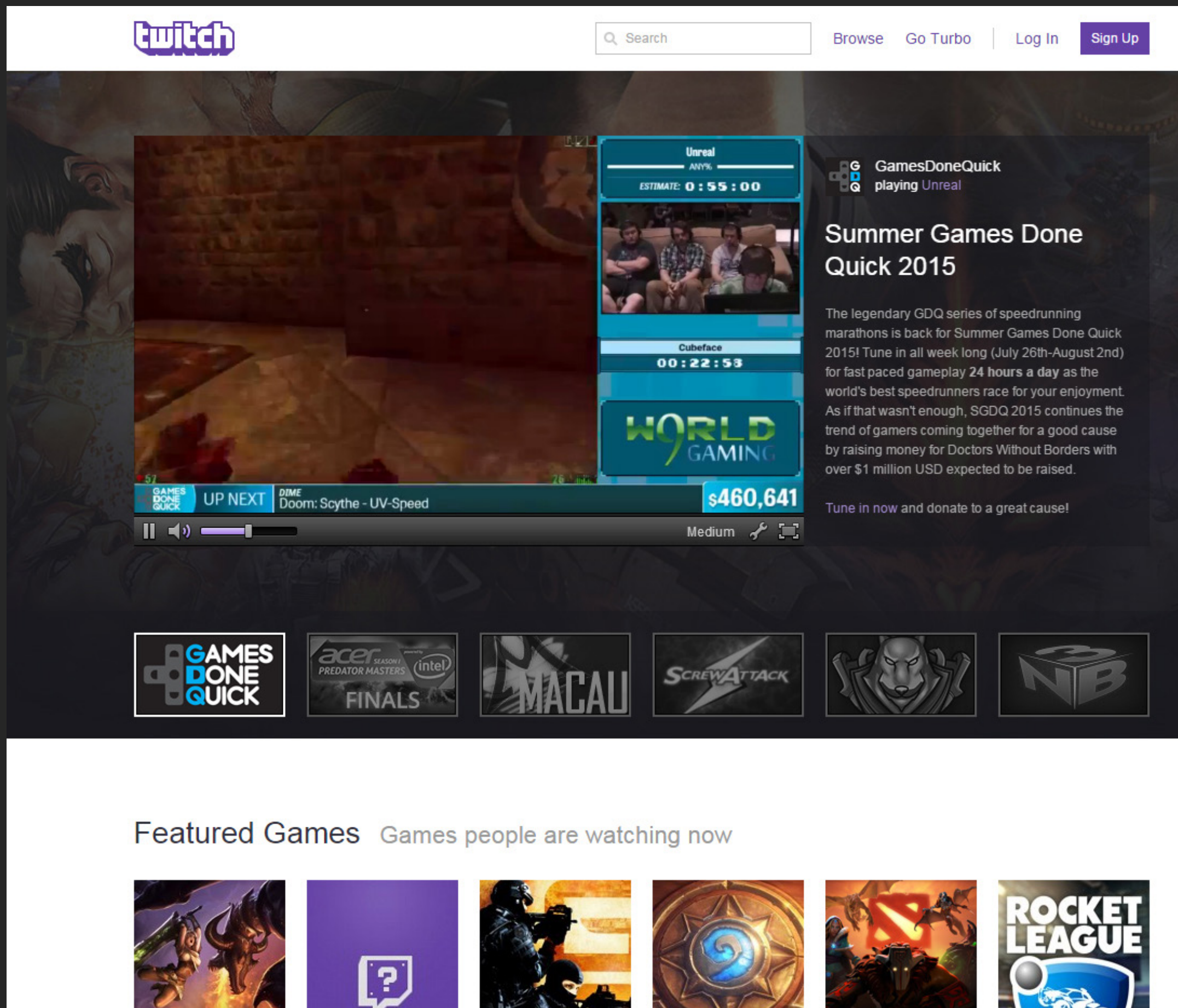



TWITCH STREAMING 101



Visit www.twitch.tv

click [Sign Up](#) to create an account

 Connect with Facebook

[Log In](#) [Sign Up](#)

Username

Password

Birthday

Month

Day

Year

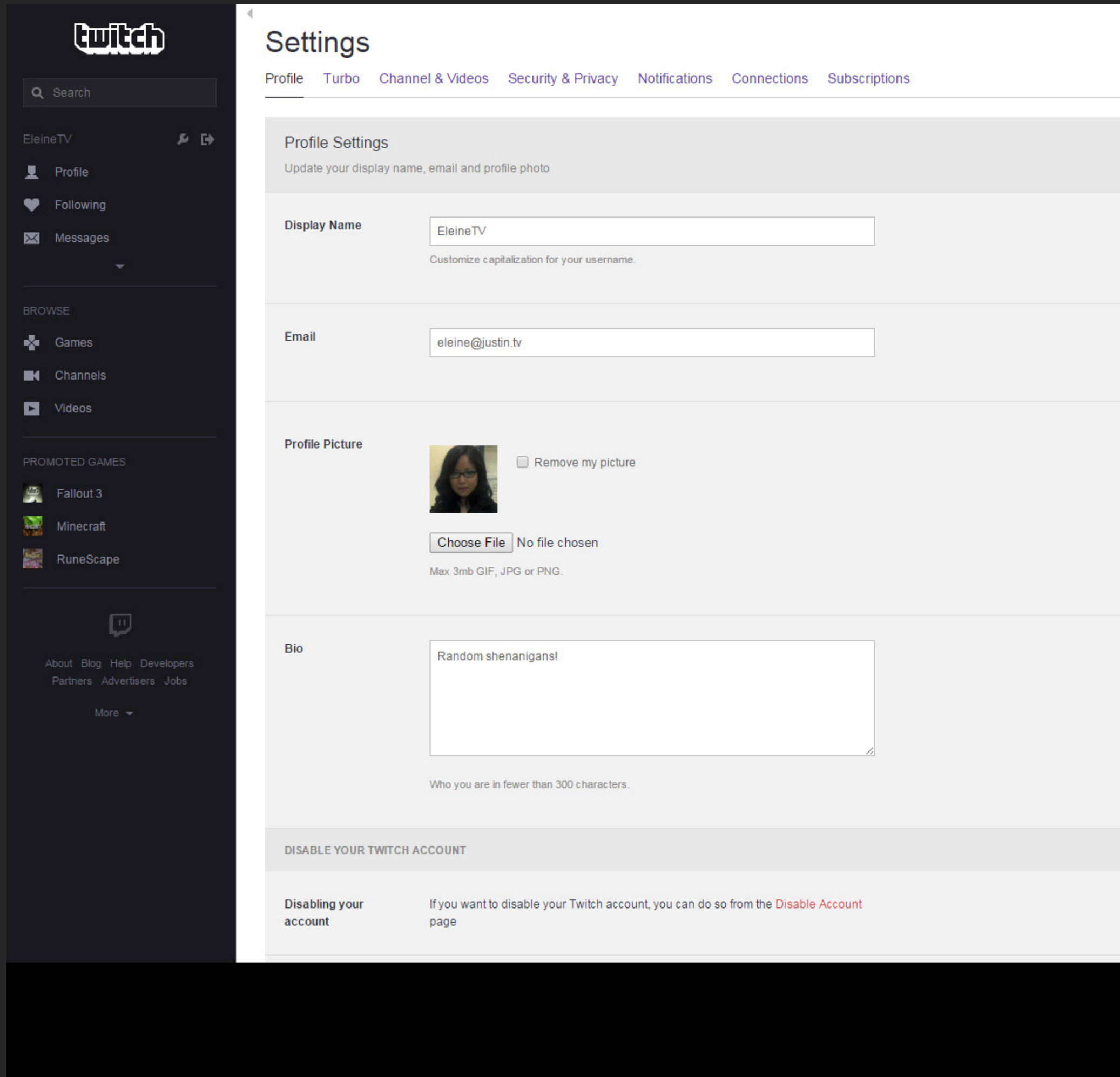
Email

By clicking Sign Up, you are indicating that you have read and agree to the [Terms of Service](#) and [Privacy Policy](#)

Sign Up



CREATING AN ACCOUNT



Visit www.twitch.tv/settings

In [Profile](#):

Customize your username capitalization by updating [Display Name](#)

Update your [Profile Picture](#) with a square image of less than 3mb in size

In [Channels & Videos](#):

Add a [Video Player Banner](#) (image displayed on your channel when you are offline) with a 16:9 image of at least 1280x720 resolution

Check [Mature Content](#) if appropriate

Check [Archive Broadcasts](#): all streams will be automatically archived for 1 week

Play around with other settings as you see fit!



SETTING UP YOUR PROFILE

Dashboard

[Live](#) [Bookmarks](#) [Editing](#) [Activity](#) [Stats](#) [Partnership](#) [Stream Key](#) [Streaming Apps](#)

[Video Manager](#)

Title this broadcast

Digital Painting

Playing ▾

Creative

Broadcast Language

English

Update

☐ Broadcaster Language Mode

Host Mode ▾

Stream Delay



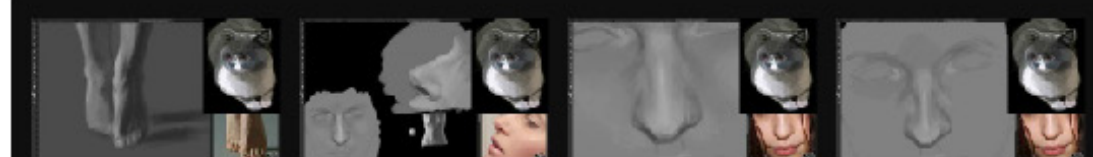
Run a Commercial

60 sec Commercial ▾

OFFLINE Hide Video Preview

Highlights

Hide



Offline 68,167 2,314

Stream Configuration Quality: Refresh the page after going live to check.
Last Checked: 2 minutes ago



eleinetv

Welcome to the chat room!

Send a message



Chat

Visit www.twitch.tv/dashboard

Broadcast Dashboard and Settings pages are accessible via either the side bar menu on each page, or the drop down menu when clicking your username at the top of a page.

The [Live Dashboard](#) allows you to control the Twitch aspects of your broadcast, including:

Broadcast Title

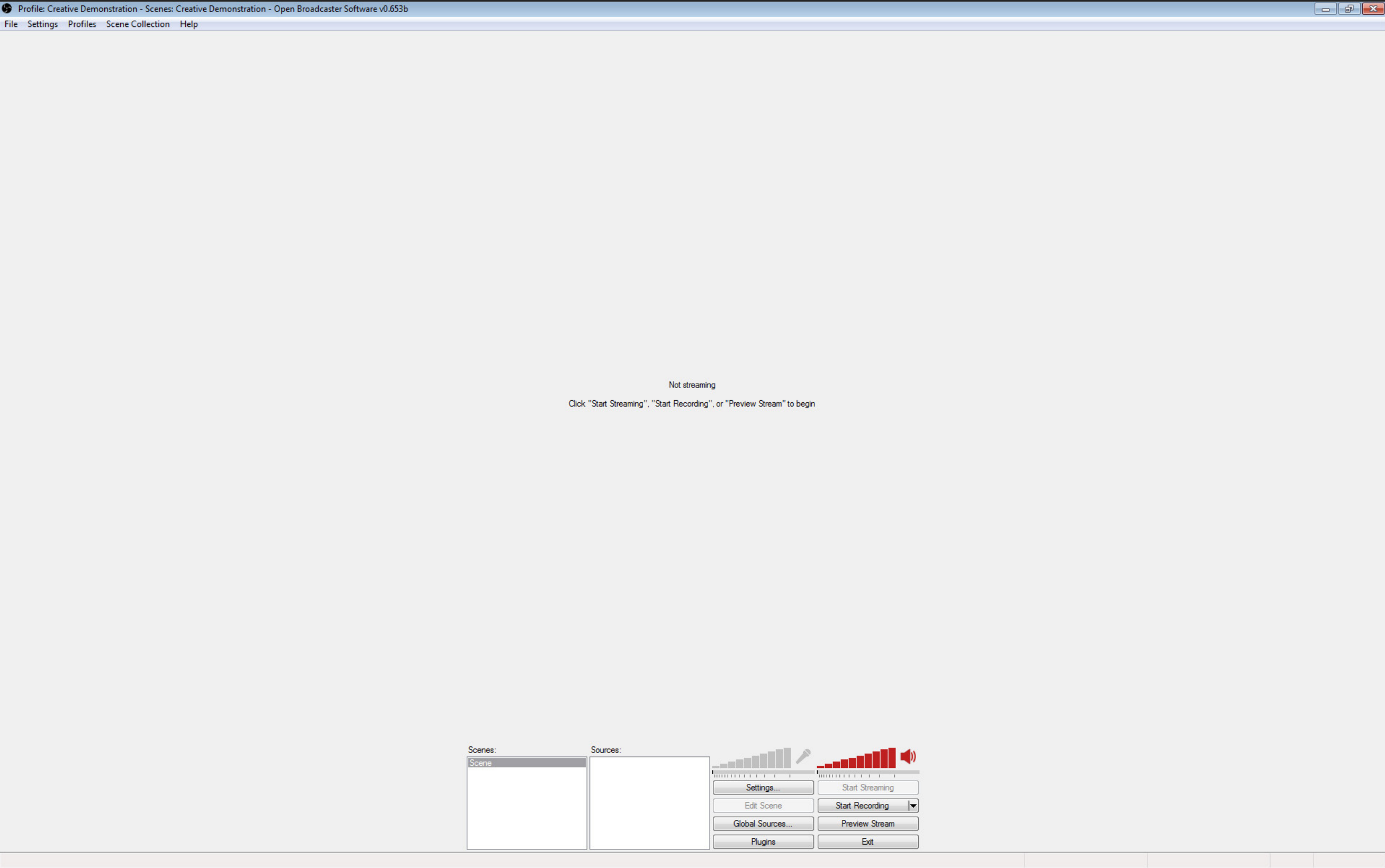
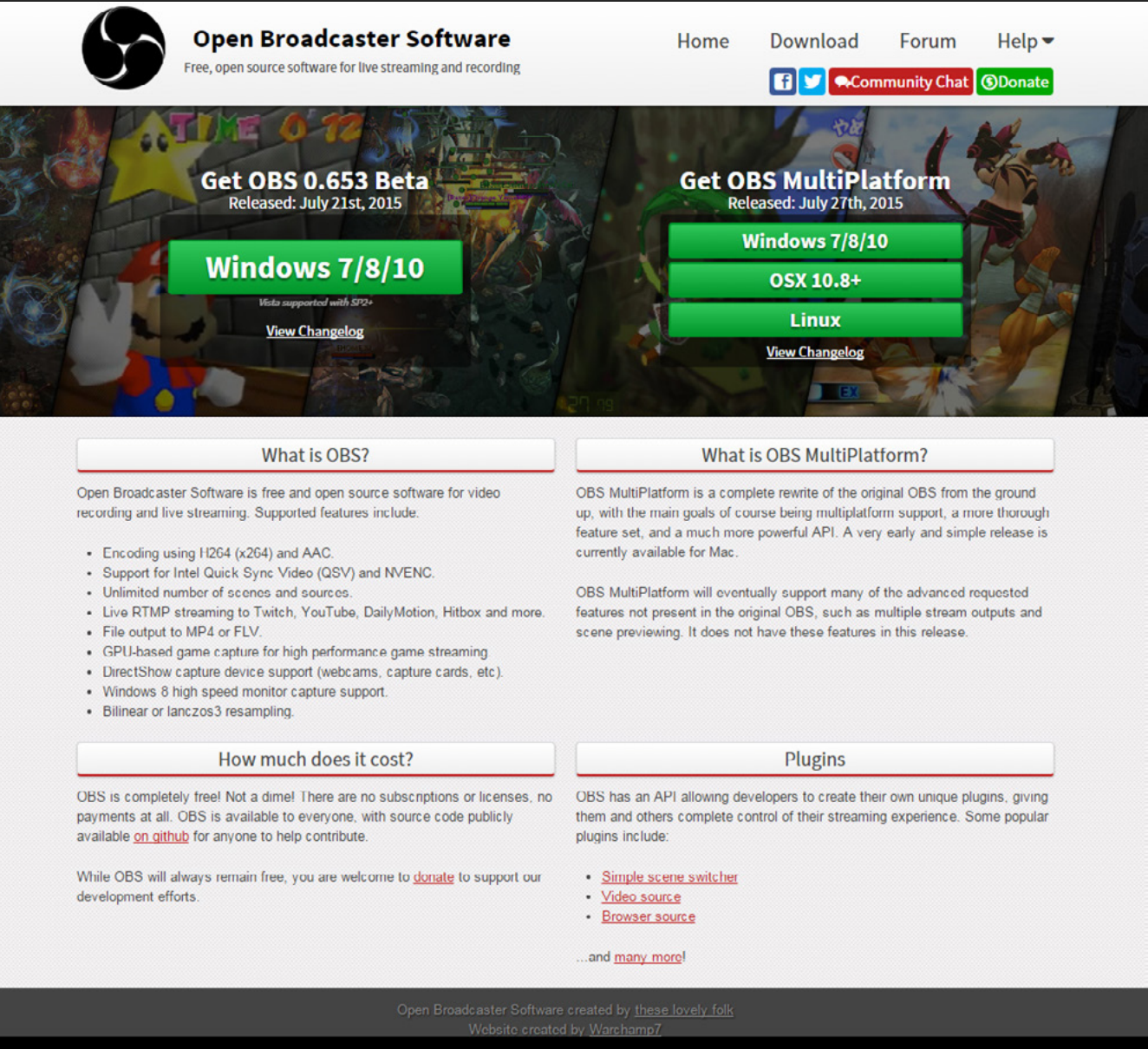
“Game” played (set this to Creative)

Chat with your viewers

Click the [Stream Key](#) link to access your unique Stream Key. Save this value for your stream set up process. Do NOT show this to others, as it will allow them to broadcast to your channel!



SETTING UP YOUR BROADCAST DASHBOARD

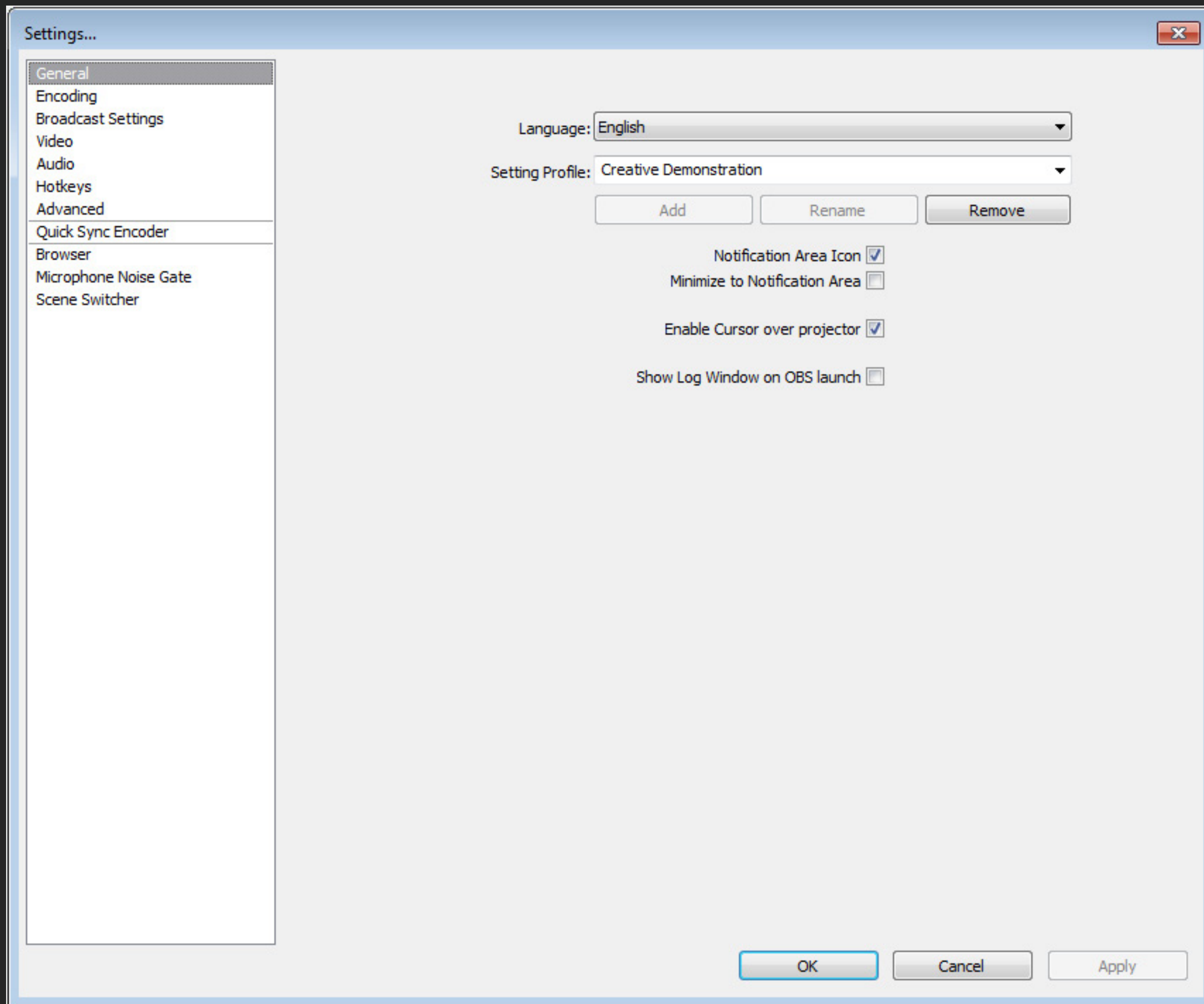


Visit <https://obsproject.com/> to download Open Broadcaster Software for your platform

Initial OBS screen. Click **Profiles** and create a new streaming profile. Click **Scene Collection** and create a new scene collection.



OPEN BROADCASTER SOFTWARE (OBS) SET UP



Click **Settings** to begin configuring stream settings.

In **General**:

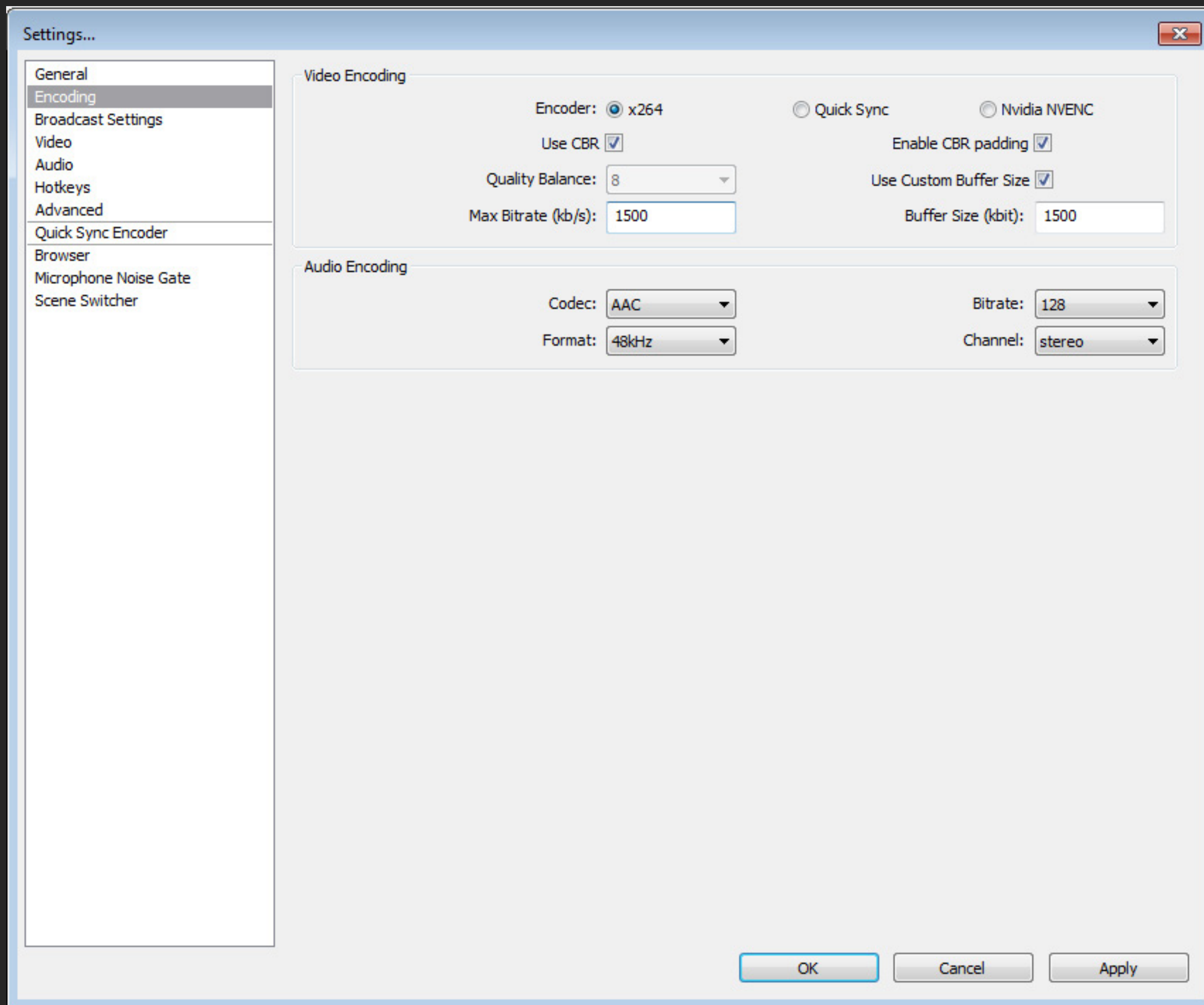
Select OBS's language.

Edit your Streaming Profile/Config Name

Edit configurations for notifications and other settings



OPEN BROADCASTER SOFTWARE (OBS) SET UP



Video Encoding:

Select x264 Encoder

Check Use CBR

Check Enable CBR padding

Set Max Bitrate to a value between 1000 and 1800

The higher the bitrate, the higher the quality of the stream. However, the majority of viewers can only process up to 2000 bitrate without lagging.

Upload rate is also affected by your internet upload bandwidth. The higher it is, the higher you can push bitrate. Since artwork requires lower framerate than gaming, lower bitrates can still provide high resolution quality.

I recommend setting bitrate to 1500 and playing around with it if you lag or if you don't think the stream has sufficient quality.

Buffer Size should be set to the same value as Max Bitrate.

Audio Encoding:

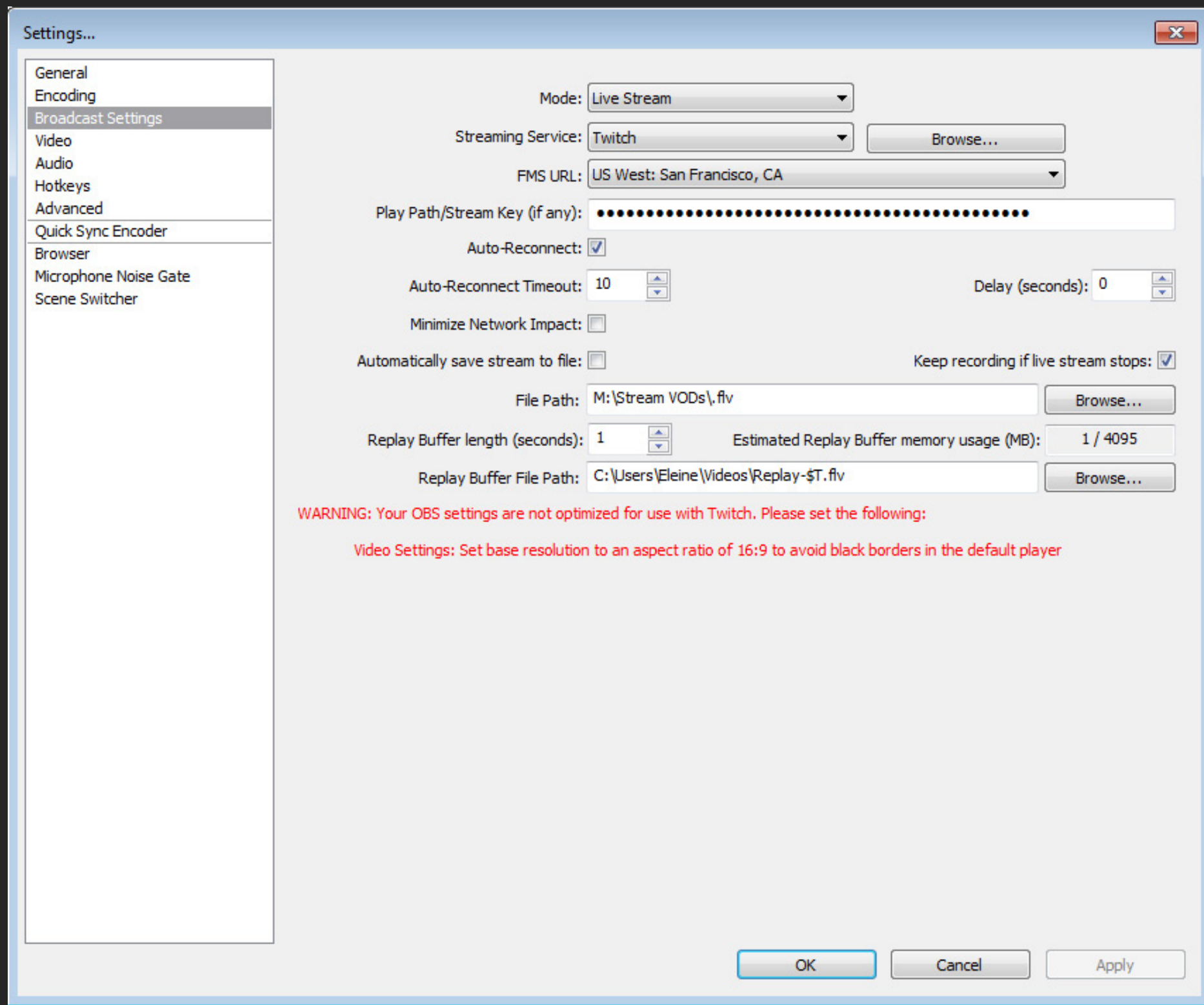
Codec should be set to AAC

Bitrate should be set to 64-128, depending on your connection speed and desired quality of sound.

Click Apply when you are done.



OPEN BROADCASTER SOFTWARE (OBS) SET UP



Broadcast Settings:

Mode: Live Stream

Streaming Service: Twitch

FMS URL: Closest Geographic server to you

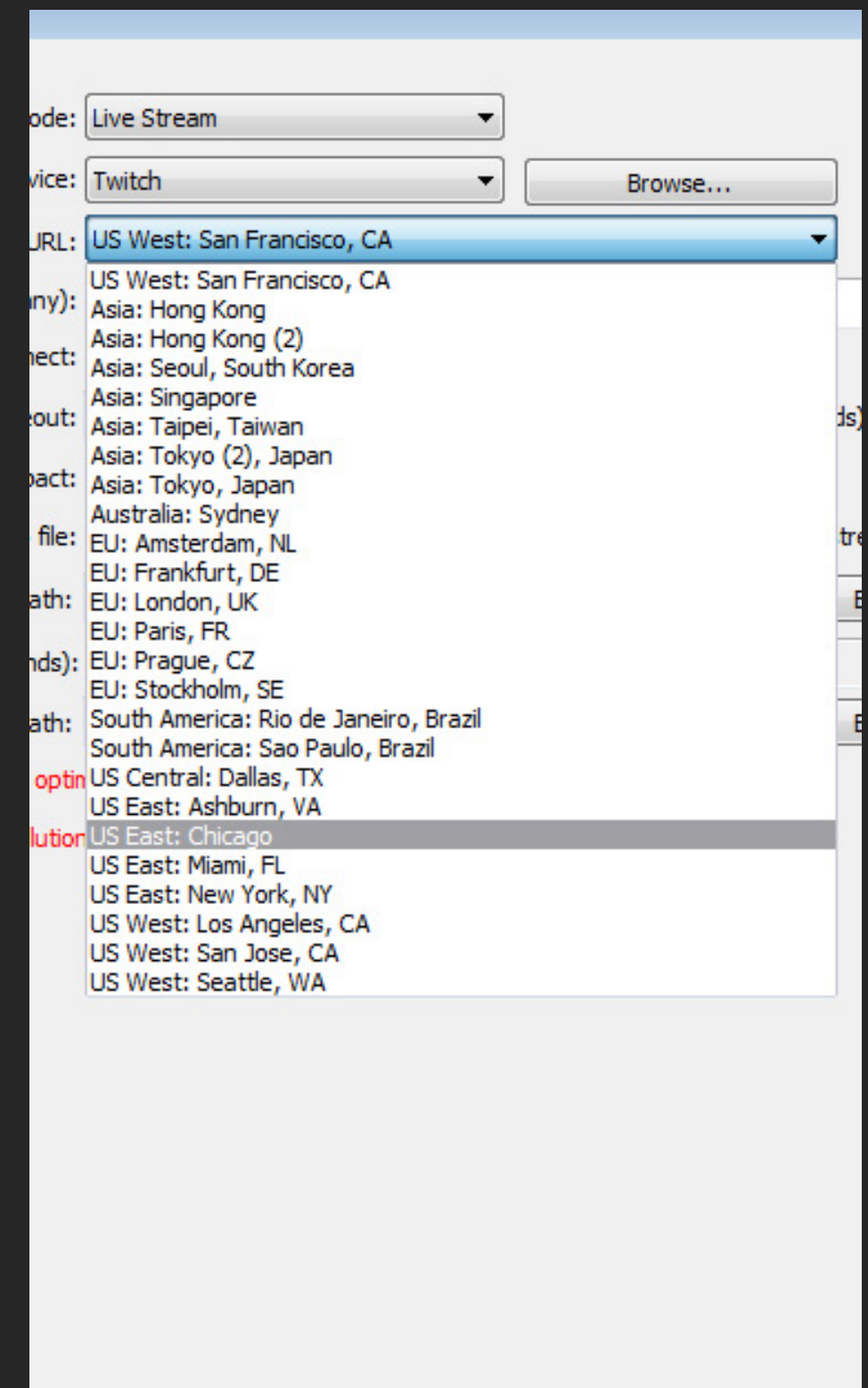
Play Path/Stream Key: The Stream Key you copied from your Broadcast Dashboard

Check Autoreconnect

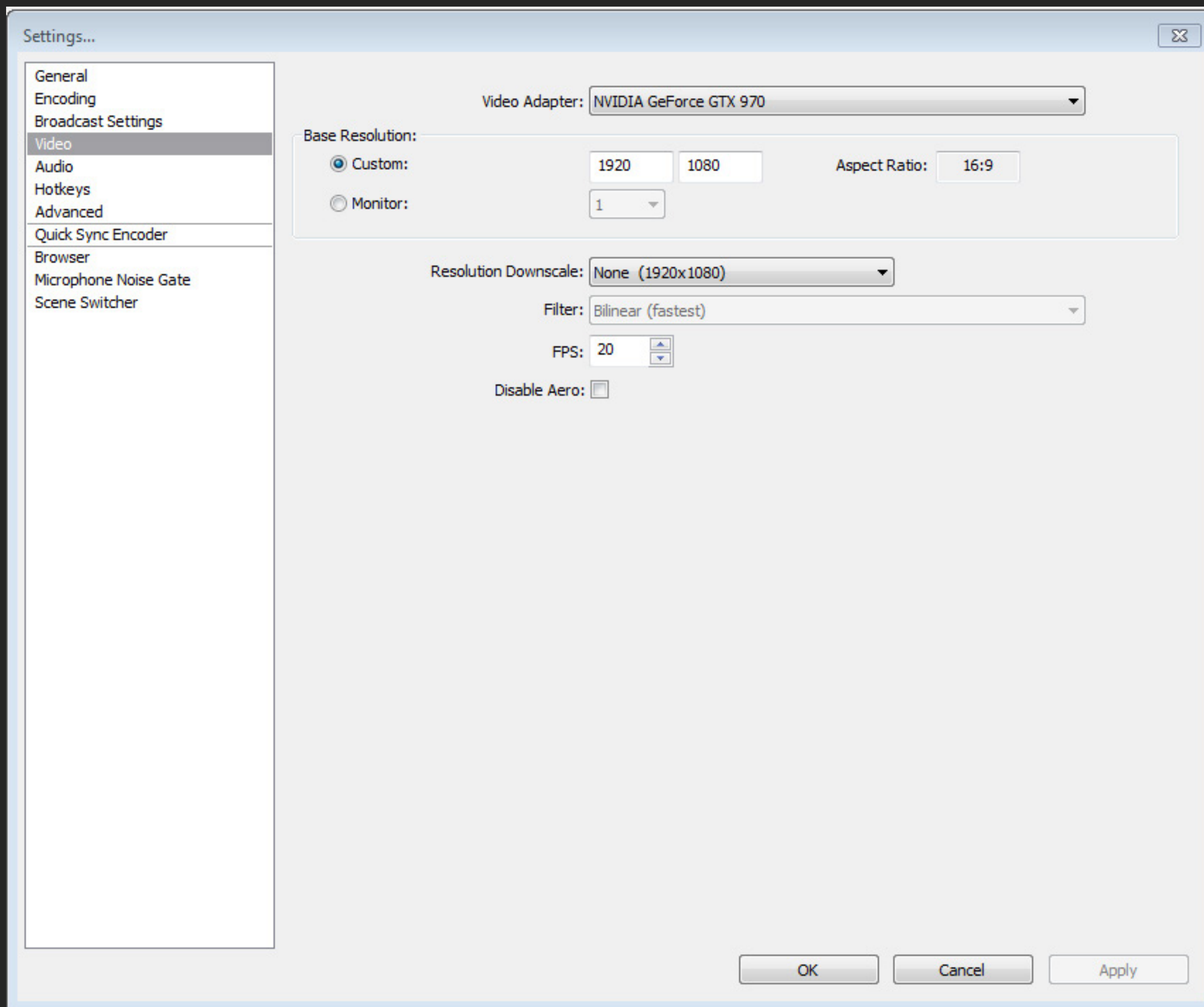
Automatically Save Stream to File:

We recommend saving your VODs locally if you want a 100% guarantee they will be saved. This will ensure you always have access to your VODs, as we do not permanently store them.

File Path: Location for VOD saves.



OPEN BROADCASTER SOFTWARE (OBS) SET UP



Video Settings:

Video Adapter should be set by default. If you have more than one, select the adapter you are primarily using.

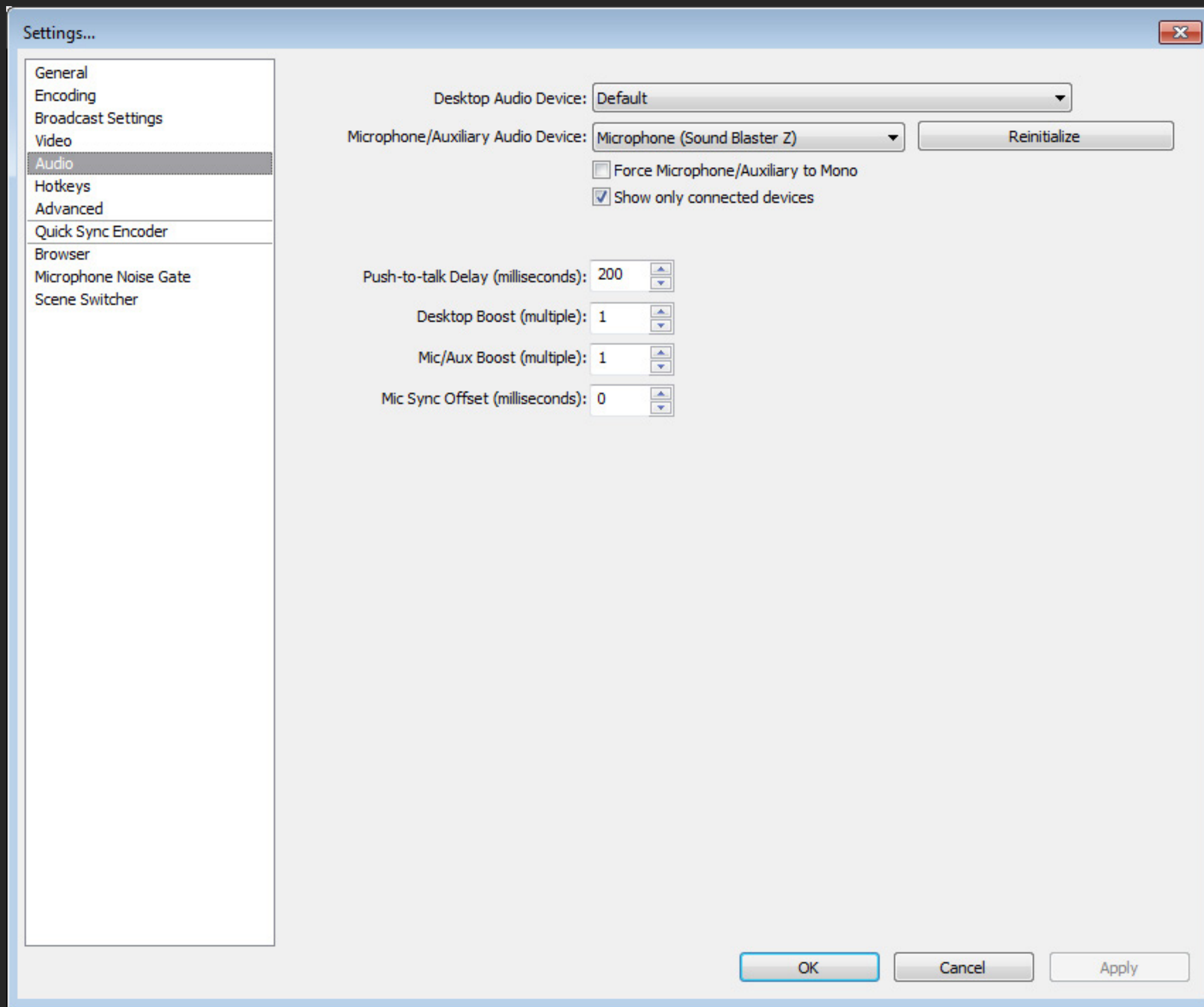
Base resolution typically is your monitor's resolution. It's recommended you use a 16:9 resolution even if your monitor is not, however.

FPS is recommended to be 20. Art streams require lower FPS, so it can be sacrificed for higher resolution quality. Adjust this value to be lower or higher at your preference, but do not set above 30.

Aero is not recommended to be disabled.



OPEN BROADCASTER SOFTWARE (OBS) SET UP



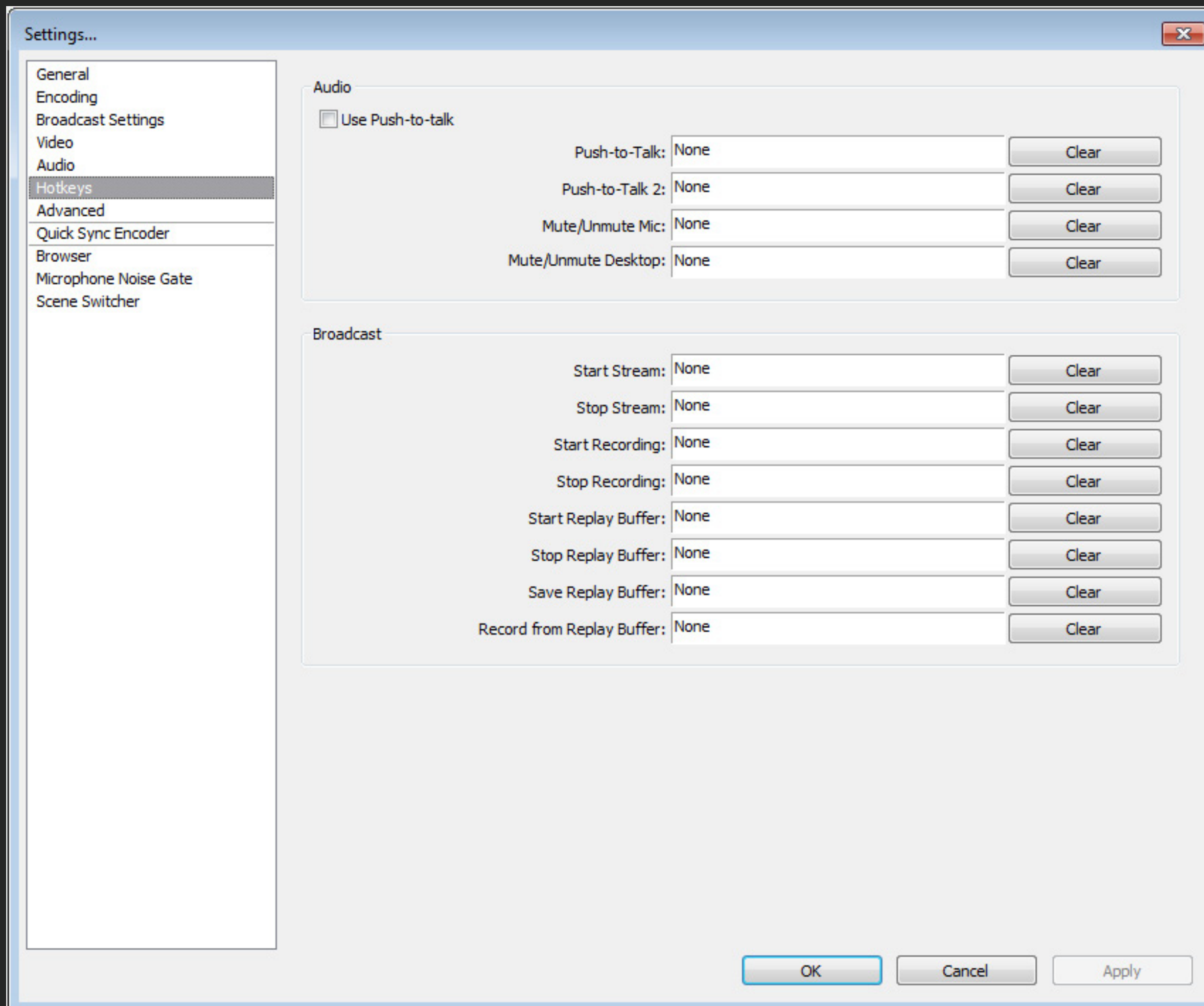
Audio Settings:

Desktop Audio Device: Recommend to set to default so the stream hears what you hear.

Microphone: Set to your microphone device.



OPEN BROADCASTER SOFTWARE (OBS) SET UP

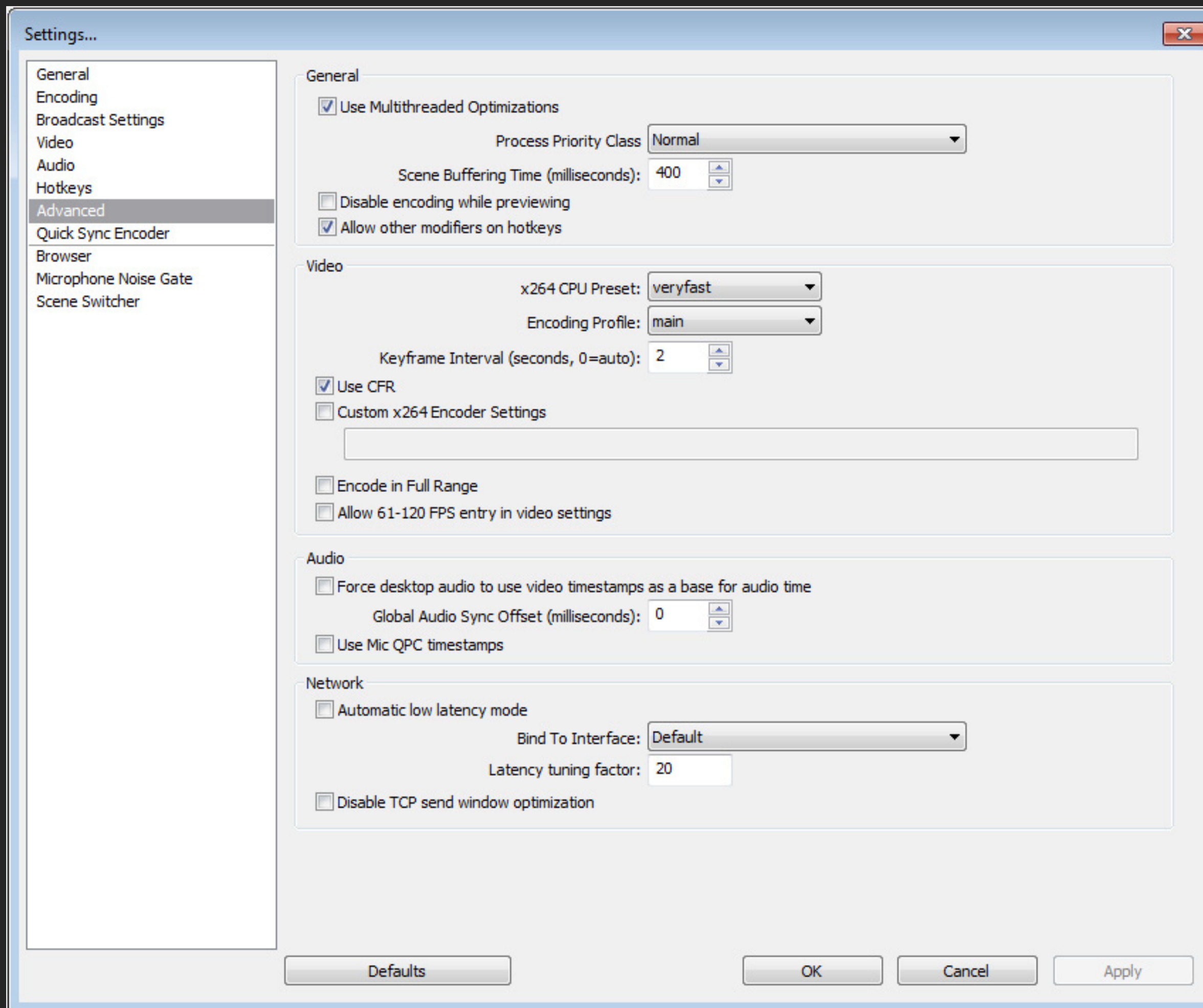


Hotkeys:

Hotkeys are not necessary for broadcasting, but can make scene switching and adding effects easier.



OPEN BROADCASTER SOFTWARE (OBS) SET UP



Advanced General Settings:

Use Multithread Optimizations: Checked

Priority Class: Normal (setting priority higher can lag other applications)

Disable Encoding While Previewing: Only check this if previewing your stream causes lag.

x264 CPU Preset: Set to **VeryFast** unless your computer is amazing. The slower the encoding, the higher the quality, but slower levels of encoding is extremely CPU intensive.

Encoding Profile: While High produces a higher quality stream, it is less compatible with viewing devices such as mobiles. Recommend set to **Main**.

Keyframe Interval: 2 Seconds (this is VERY important)

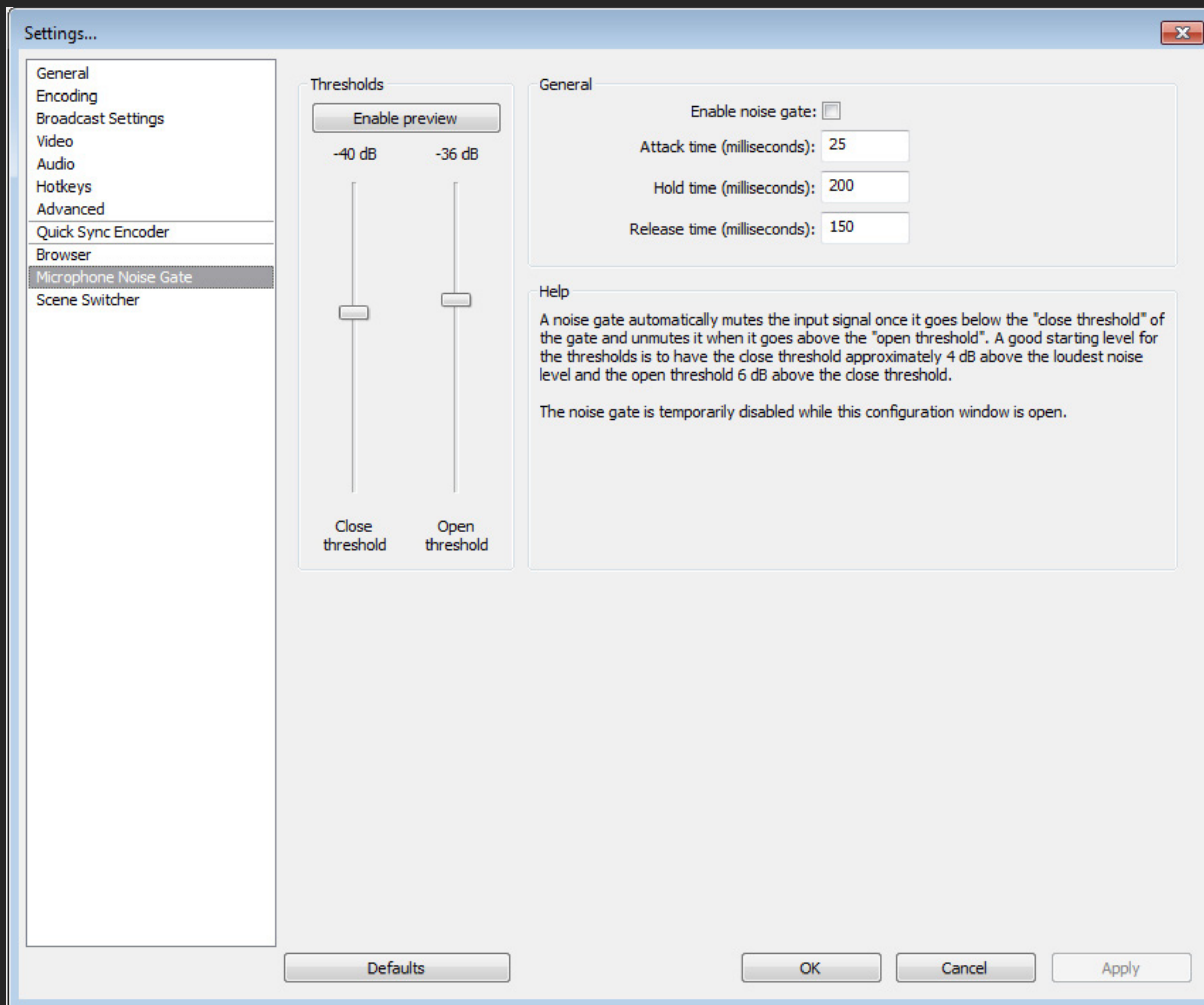
Use CFR: Checked

Advanced Audio Settings:

Global Audio Sync Offset: Use this to adjust audio if you have audio sync issues.



OPEN BROADCASTER SOFTWARE (OBS) SET UP



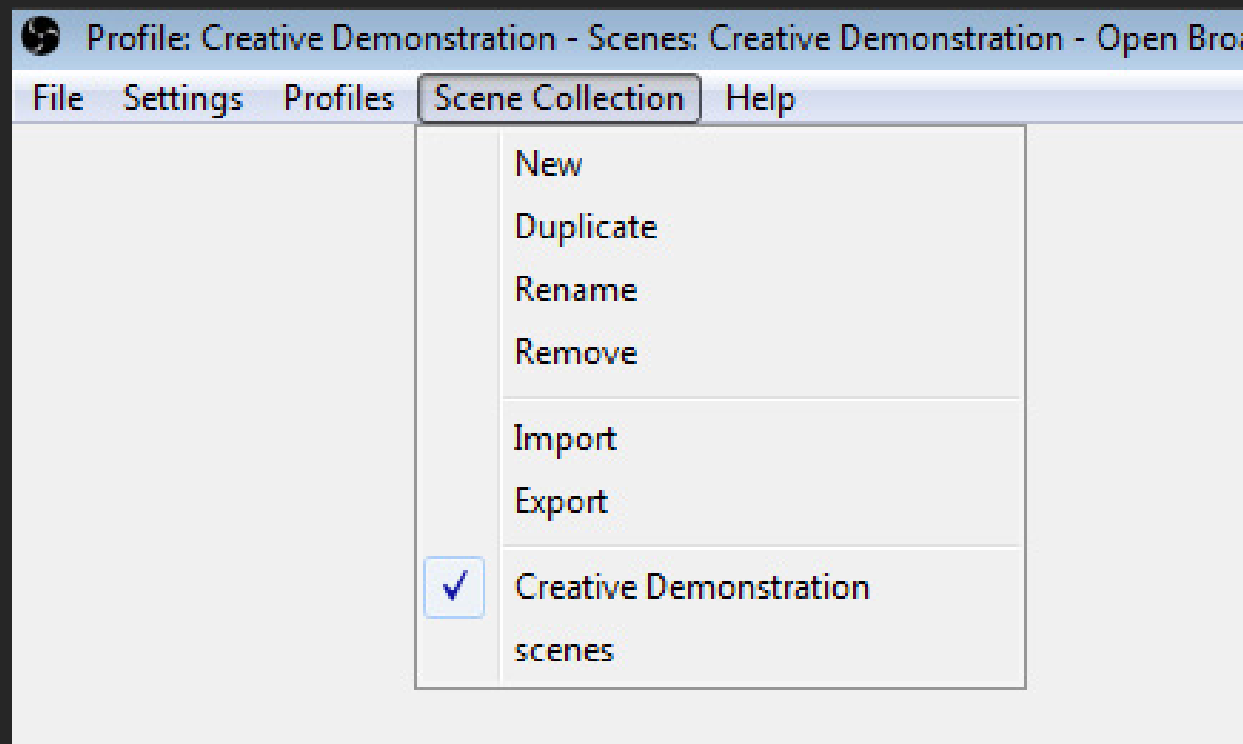
Microphone Noise Gate:

Use the Close and Open threshold to determine when OBS should broadcast your microphone. Use the Enable Preview option to find the best settings.

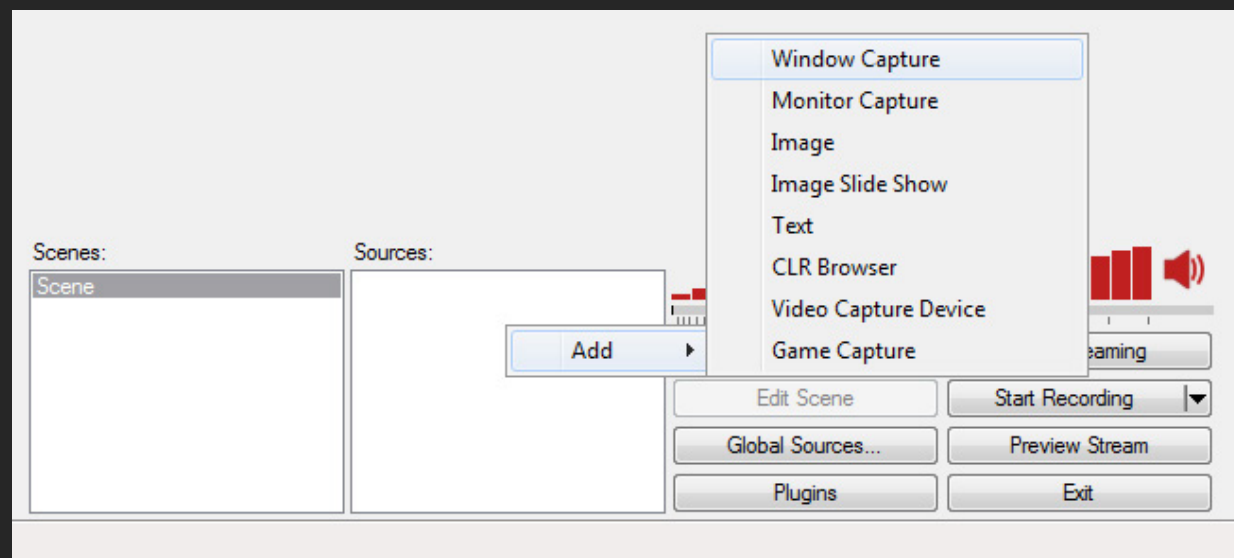
Attack time, hold time, and release time generally don't need to be changed.



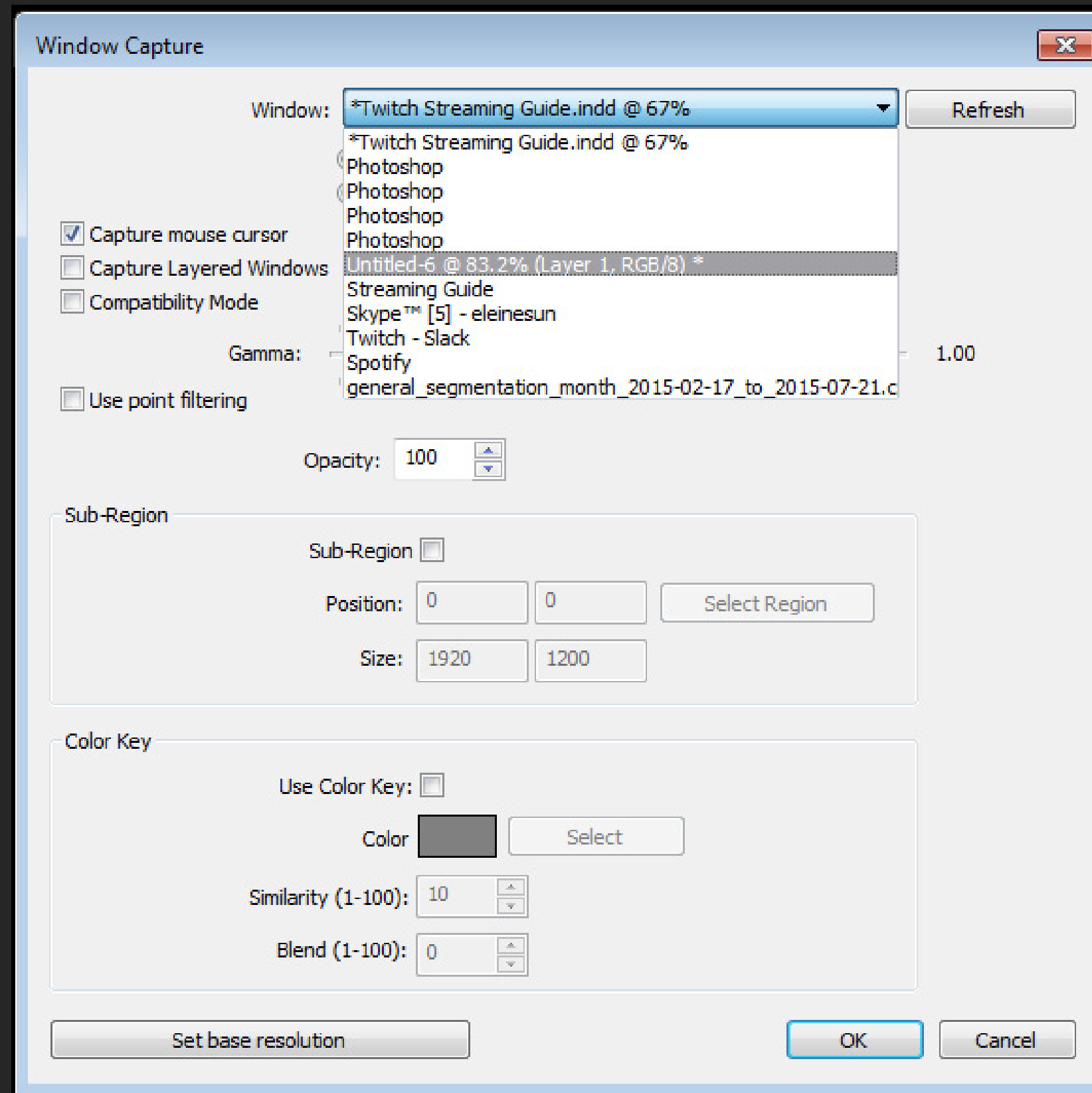
OPEN BROADCASTER SOFTWARE (OBS) SET UP



Create a new Scene Collection



Add a Window Capture and name it



Open a project in Photoshop. Select it from the Window drop down menu. Do NOT select Photoshop.

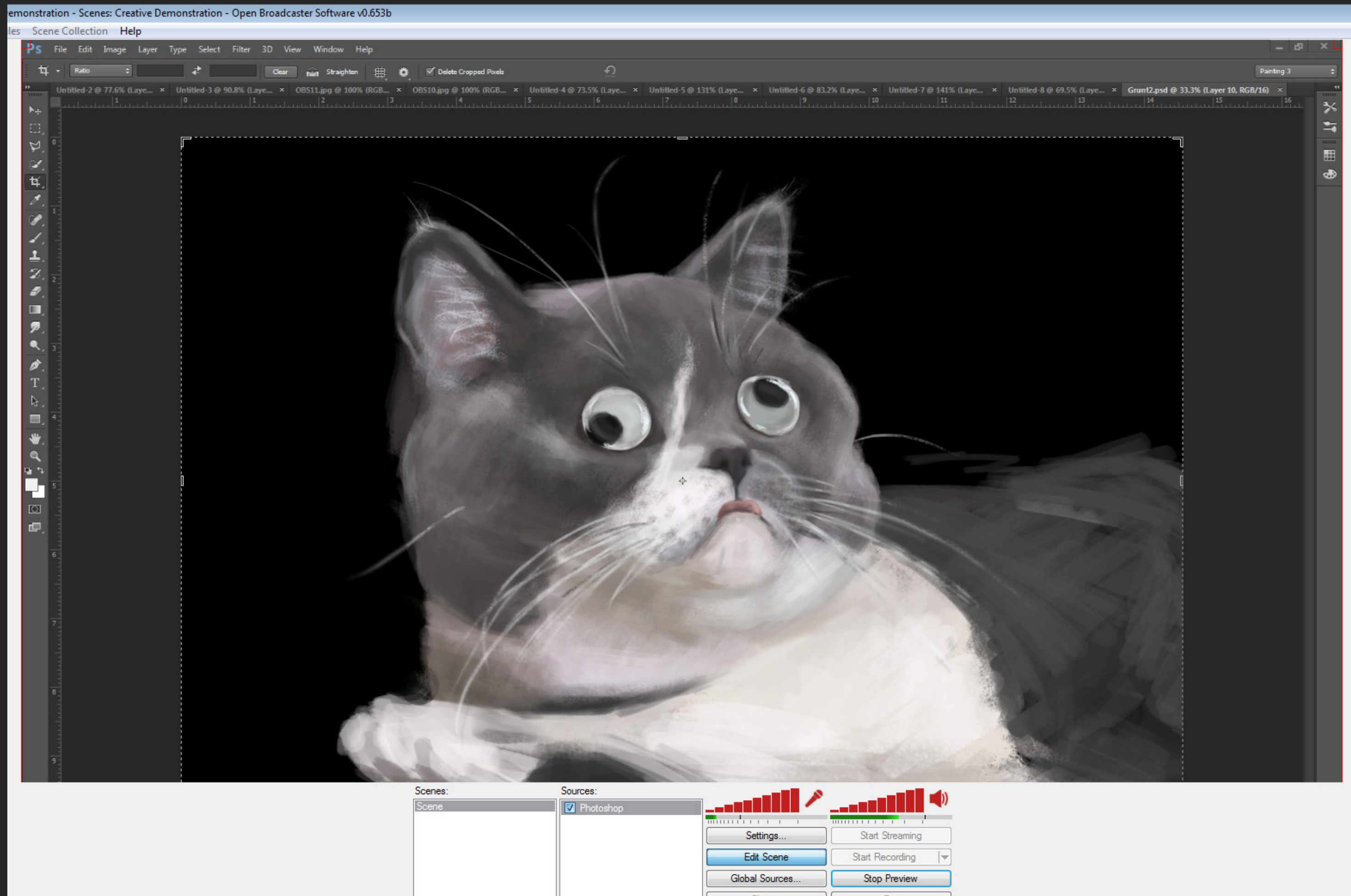
Photoshop interacts with OBS strangely, and selecting Photoshop will not work.

No need to touch any other settings.

Tab into photoshop once for OBS to begin capturing.



ADDING PHOTOSHOP TO THE STREAM



Click [Edit Scene](#) to adjust the placement and size of elements on the stream. A red border will appear on each element.

Refer to <http://help.twitch.tv/customer/portal/articles/1262922-open-broadcaster-software> for an in depth explanation of OBS settings and guides on how to add various other elements to your stream!



ADJUSTING THE SCENE

**HAPPY
STREAMING!**